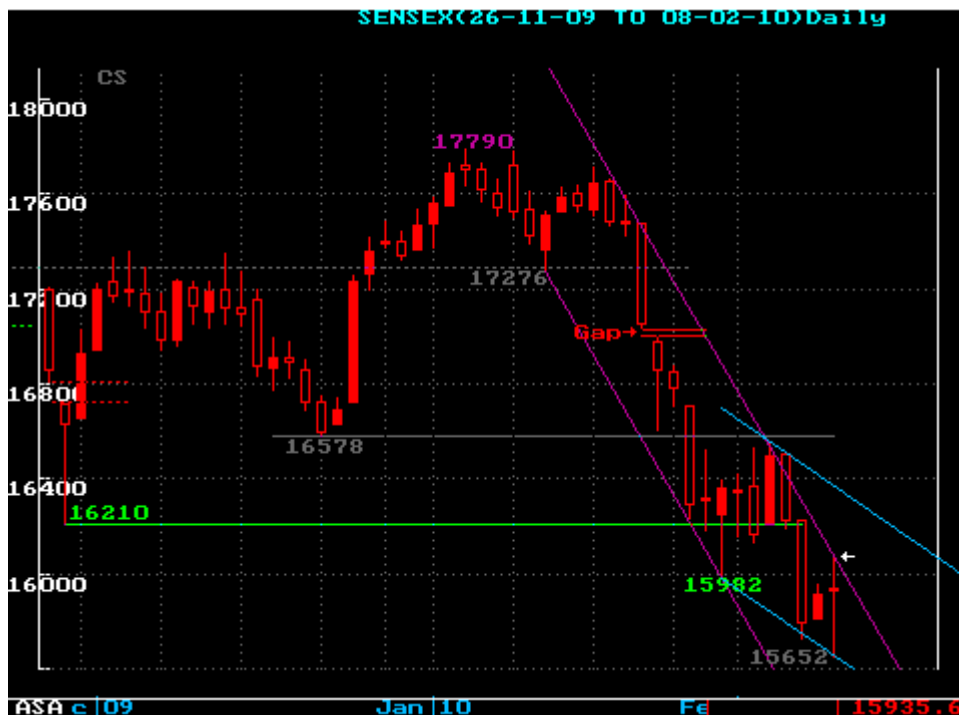


Sensex: We said, "The fall over the last 21 days, achieves equality with the fall seen during Oct'09 (17493 to 15331). That can attract supportive effort ..." It did. Initially down 260, Index attracted strong supportive efforts at 16652 level and recovered 400 points before ending flat. Most sectors also recovered, resulting in +ve A/D.

The action formed a Long Legged Doji, with open and close at the same level. Doji can prove a turning point if we see a follow-up support above its head at 16061 which is touching the upper end of the purple channel. Move above this channel is required to test the new upper Blue channel. Else, continue uneasy inside existing channel.



Nifty Futures (NIFTY)

CMP :	4764.90
Comment :	Future discount down from 8 points to 4. Breaking original Red falling channel, testing gap-down area. Reverse if fails to reach/sustain above 4865.
Action :	Buy above 4725
Targets :	4750 / 4806 / higher
Stop-loss :	4723

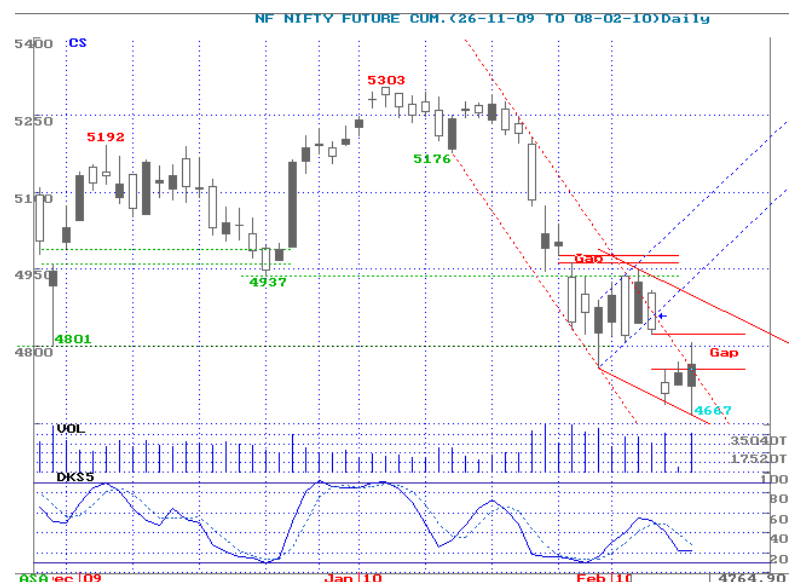
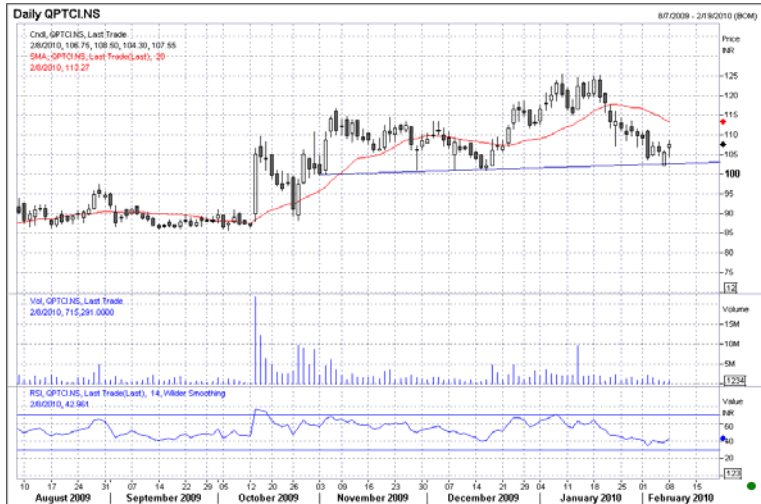


ABB (ABB)

CMP	788.95
Comment:	Price above 50 days SMA and price rise with volume
Action:	Buy above 789.30
Targets:	799/ 805 / Higher
Stop-loss:	784


PTC (POWTRA)

CMP:	107.75
Comment:	Trendline support and RSI in buy mode
Action :	Buy above 107
Targets:	110/ 112/ Higher
Stop-loss	106


PATNI COMPUTER (PATCOM)

CMP:	454.55
Comment:	RSI in sell mode and price fall with volume
Action :	Sell below 454
Targets:	448/ 444/ Lower
Stop-loss	457.50



TATA POWER (TATPOW)

CMP:	1276.50
Comment:	Price fall with volume and RSI in sell mode
Action :	Sell below 1275
Targets:	1261 / 1250/ Lower
Stop-loss	1282

**Previous day's Performance Review**

<u>Counter</u>	<u>Action</u>	<u>Targets</u>	<u>Comments</u>	<u>Return opportunity</u>
Nifty	Buy above 4720	4732/4760/+	Gained: 4720 to 4805	85 Points
Indian Oil Corp	Buy above 316.80	322/325/+	SL Triggered	-0.90%
Oriental Bank	Buy above 262	266/268/+	Target 2 Achieved	2.30%
Bharti Airtel	Sell below 300.50	296/294/-	No Trade	0.00%
Siemens	Sell below 628	618/608/-	SL Triggered	-1.10%

Nifty Points gained for the day: 85

Stock profits: Average 0.1% per trade

Strike Rate for the day: 1/3

Cum. gains over last 191 days: 12096 points

Cum. Profits over last 156 day: 599.75%

Cum. Strike Rate over 156 day: 379/475 (80%)

Performance: 2007-08

Nifty Points gained: 16627

Stock Profits: 783.2%

Strike Rate: 90%

Performance: 2008-09

Nifty Points gained: 14524

Stock Profits: 956.46%

Strike Rate: 88.25%

STOCK	CLOSE	S1	S2	S3	R1	R2	R3	TREND
SENSEX	15935.61	15909.30	15806.95	15704.60	16114.00	16154.05	16194.10	+ve
NIFTY	4760.40	4752.65	4721.75	4690.85	4814.50	4828.35	4842.20	+ve
ACC	842.65	828.75	826.30	823.85	843.25	850.50	857.75	-ve
ANDHRA BANK	100.20	100.05	99.25	98.40	101.70	102.15	102.60	+ve
ARVIND	35.65	35.60	35.30	35.00	36.20	36.50	36.80	+ve
BAJAJ AUTO	1699.15	1678.25	1662.50	1646.75	1703.20	1715.65	1728.10	-ve
BALAJI TELE	54.10	54.20	53.55	52.95	55.45	56.15	56.85	+ve
BOB	573.00	572.45	567.10	561.75	583.15	585.40	587.70	+ve
BOI	346.40	345.25	341.80	338.35	352.20	353.80	355.45	+ve
BEL	1960.55	1937.05	1919.45	1901.85	1967.30	1982.40	1997.55	-ve
BPCL	573.10	560.30	555.85	551.35	573.00	579.35	585.70	-ve
BHEL	2328.00	2320.95	2302.55	2284.15	2357.75	2366.00	2374.25	+ve
CANARA BANK	388.65	387.50	384.35	381.20	393.75	395.50	397.20	+ve
CENTURY TEXT.	481.90	479.30	473.30	467.35	491.25	497.70	504.15	+ve
CIPLA	316.75	314.90	311.50	308.15	321.70	322.45	323.20	+ve
DR.REDDY'S LAB.	1115.60	1101.10	1094.60	1088.15	1118.10	1126.55	1135.05	-ve
GAIL	410.10	402.40	400.05	397.65	411.90	416.65	421.40	-ve
GEOMETRIC	59.60	59.85	59.30	58.75	60.95	62.65	64.40	+ve
GRASIM	2557.85	2532.05	2523.55	2515.05	2559.90	2573.80	2587.75	-ve
AMBUJA CEMENT	101.05	100.75	100.10	99.45	102.05	102.35	102.70	+ve
HCL TECH	341.60	340.80	337.65	334.50	347.05	348.30	349.50	+ve
HDFC BANK	1567.40	1548.00	1542.50	1537.00	1567.90	1577.85	1587.85	-ve
HDFC	2393.50	2332.35	2324.80	2317.25	2389.85	2418.60	2447.35	-ve
HERO HONDA	1578.25	1557.00	1551.40	1545.80	1583.35	1596.50	1609.70	-ve
HEXAWARE TECHNOL	73.65	72.80	72.00	71.15	74.50	75.30	76.15	Neutral
HINDALCO	136.20	132.00	130.80	129.55	137.05	139.55	142.10	-ve
HINDUSTAN UNILEVER	236.50	235.65	233.55	231.45	239.90	240.60	241.30	+ve
HPCL	343.25	336.20	332.70	329.20	344.65	348.85	353.10	-ve
HINDUJA TMT	314.20	314.65	311.45	308.25	321.10	323.15	325.20	+ve
ICICI BANK	805.35	804.40	796.15	787.90	820.90	824.05	827.15	+ve
IDBI	117.30	116.25	115.35	114.75	118.00	118.85	119.50	Neutral
I-FLEX SOLUTION	2184.90	2133.95	2126.80	2119.65	2181.40	2205.15	2228.85	-ve
IOC	309.70	305.60	302.75	299.85	310.90	313.55	316.20	-ve
INFOTECH ENT.	323.30	315.50	311.50	307.55	324.05	328.35	332.65	-ve
INFOSYS	2403.60	2400.15	2375.75	2351.40	2448.90	2457.85	2466.80	+ve
ITC	245.35	241.30	240.70	240.10	245.05	246.95	248.80	-ve
JINDAL SAW	191.60	189.95	186.40	182.85	197.05	197.65	198.25	+ve
KPIT CUMMINS	106.65	104.15	103.20	102.20	107.60	109.35	111.05	-ve
LARSEN & TOUBRO	1444.45	1442.20	1430.10	1417.95	1466.45	1470.60	1474.75	+ve

LIC HOUSING	753.85	749.55	739.05	728.55	770.55	774.55	778.55	+ve
M & M	999.80	996.05	985.35	974.65	1017.45	1020.95	1024.40	+ve
MARUTI SUZUKI	1362.05	1353.65	1343.25	1335.30	1374.45	1384.85	1392.80	Neutral
MASTEK	388.95	387.55	383.15	378.80	396.30	402.35	408.40	+ve
MTNL	73.05	72.75	71.95	71.20	74.30	74.60	74.90	+ve
NALCO	363.95	358.30	356.50	354.70	364.90	368.20	371.55	-ve
NTPC	202.40	199.75	199.15	198.55	203.15	204.85	206.50	-ve
ONGC	1118.15	1111.90	1099.25	1086.65	1137.15	1140.85	1144.60	+ve
OBC	263.35	262.60	259.25	255.90	269.25	271.60	273.90	+ve
POLARIS	158.35	157.75	156.20	154.65	160.85	162.00	163.20	+ve
PNB	884.85	879.55	869.35	859.10	899.95	902.70	905.45	+ve
RANBAXY	401.80	395.90	392.95	390.05	403.35	407.10	410.85	-ve
RELIANCE INFRA.	1041.15	1035.70	1024.85	1014.05	1057.35	1061.75	1066.20	+ve
RELIANCE	994.35	985.45	978.10	974.15	1000.15	1007.45	1011.40	Neutral
ROLTA INDIA	179.40	173.50	172.40	171.35	180.15	183.45	186.80	-ve
SAIL	204.35	198.35	197.20	196.10	203.95	206.70	209.50	-ve
SATYAM	97.70	97.15	96.50	95.90	98.50	99.15	99.75	Neutral
SCI	149.00	148.60	147.50	146.40	150.80	151.45	152.10	+ve
SBI	1936.55	1929.60	1913.55	1897.55	1961.70	1968.35	1975.00	+ve
SYNDICATE BANK	83.60	83.20	82.25	81.30	85.15	85.50	85.80	+ve
TATA CHEMICALS	292.50	291.50	289.30	287.10	295.90	297.40	298.90	+ve
TATA MOTORS	673.25	642.05	639.45	636.90	669.10	682.65	696.20	-ve
TATA POWER	1284.95	1252.85	1246.35	1239.85	1288.55	1306.40	1324.25	-ve
TATA TEA	939.70	930.05	923.20	919.45	943.75	950.60	954.35	Neutral
TCS	724.15	709.95	707.10	704.30	723.25	729.90	736.55	-ve
TATA STEEL	533.85	519.35	516.15	512.95	538.25	547.70	557.15	-ve
UBI	247.85	246.55	243.50	240.45	252.65	253.95	255.25	+ve
TATA COMM.	307.65	306.60	304.85	303.30	310.15	311.95	313.45	Neutral
WIPRO	636.20	627.55	624.30	621.05	637.50	642.45	647.40	-ve
ZEE	261.95	261.90	259.60	257.30	266.50	268.60	270.75	+ve

NOTES :

- The Sell below / above price is a key technical level which decides the trend for the day
- Once the call is initiated, an appropriate Stop Loss trigger should be put for the trade
- Once into position, put trailing stops to preserve your profits
- Be careful if the counter achieves the target immediately after opening
- The strategies are valid only for the date mentioned at the top
- Positions should be squared off by the end of the day
- Only stocks in derivatives segment have been considered for daily trading
- Chart shows 50 days on NSE cash market, with 5/8/13/21 day EMAs, volumes & 5-day Slow Stochastics
- The vertical grids show weeks, horizontal grids are price-aligned
- The writer may have position in the stocks discussed
- The strategies are based on intra-day volatility, suggesting a two-way approach intra-day
- Medium to long-term prospects of a stock does not have any bearing on the daily view

MOST IMP: The follow-up and performance review table of the strategies indicates the profit opportunity that was available in the strategies. Individual profits may vary, depending upon the entry and exit price and stop losses.

ICICIdirect.com Technical Desk

ICICI Securities Limited,
7th Floor, Akruiti Centre Point,
MIDC Main Road, Marol Naka
Andheri (East), Mumbai – 400 093

research@icicidirect.com

DISCLAIMER: The report and information contained herein is strictly confidential and meant solely for the selected recipient and may not be altered in any way, transmitted to, copied or distributed, in part or in whole, to any other person or to the media or reproduced in any form, without prior written consent of ICICI Securities Limited. "The author of the report does not hold any investment/open position in any of the companies mentioned in this report. ICICI Securities Services Ltd (I-Sec) may be holding a small number of shares/ an open position in the above referred companies as on the date of release of this report." This report is based on information obtained from public sources and sources believed to be reliable, but no independent verification has been made nor is its accuracy or completeness guaranteed. This report and information herein is solely for informational purpose and may not be used or considered as an offer document or solicitation of offer to buy or sell or subscribe for securities or other financial instruments. Nothing in this report constitutes investment, legal, accounting and tax advice or a representation that any investment or strategy is suitable or appropriate to your specific circumstances. The securities discussed and opinions expressed in this report may not be suitable for all investors, who must make their own investment decisions, based on their own investment objectives, financial positions and needs of specific recipient. This may not be taken in substitution for the exercise of independent judgement by any recipient. The recipient should independently evaluate the investment risks. ICICI Securities Ltd and affiliates accept no liabilities for any loss or damage of any kind arising out of the use of this report. Past performance is not necessarily a guide to future performance. Actual results may differ materially from those set forth in projections. ICICI Securities Ltd may have issued other reports that are inconsistent with and reach different conclusion from the information presented in this report. This report is not directed or intended for distribution to, or use by, any person or entity who is a citizen or resident of or located in any locality, state, country or other jurisdiction, where such distribution, publication, availability or use would be contrary to law, regulation or which would subject ICICI Securities Ltd and affiliates to any registration or licensing requirement within such jurisdiction. The securities described herein may or may not be eligible for sale in all jurisdictions or to certain category of investors. Persons in whose possession this document may come are required to inform themselves of and to observe such restriction.

TECHNICAL PRODUCT BASKET					
Research Product	Perspective	Frequency	Time frame	Avg. Returns objective	Location on ICICIdirect.com
Pre-market open view					
Daily Technical	Features three stocks with a trading outlook for the day based on short-term technical trends considering key technical indicators & statistical information.	Daily	1 Day	2 – 3 %	Home page-Trading recommendation, Research page-Technical recommendations
Daily Derivative	Trading strategy for a day in the futures & options segment based on news events, market trends, technical & other factors governing movements in stocks.	Daily	1 Day	2 - 3%	Home page-Trading recommendation, Research page-Technical recommendations, Trading Page - Scroller
Momentum Pick	Provide trading strategy for a day based on technical and derivative outlook.	Daily	1 Day	2- 3%	Internal Mailer
Advanced Derivative Strategies	Provides simplified Derivative strategies such as Spreads and Covered calls	Daily			iClick-2-Gain
Intra-day Technical recommendations					
BTST Calls	Based on short term technical trends and stock specific news/news expectations.	Daily	1 – 2 Days	1 - 2%	Trading Page - iCLICK-2-GAIN
Margin Calls					
Derivative Calls					
Weekly recommendations					
Weekly Calls	Features stocks with a trading outlook for a week based on short-term technical trends considering key technical indicators & statistical information.	Weekly	1-7 days	4 – 5%	Home Page & Research Page
Weekly Technicals	Features market outlook for the coming week with focus on one of the sector which may outperform broader markets.	Weekly	1-7 days	4 – 5%	Internal Mailer
Weekly Derivatives	Trading opportunities in futures & options segment based on fundamental & technical analysis also incorporates factors such as overall market trend, volatility & open interest positions of securities.	Weekly	1-7 days	4 – 5%	Home Page, Research Page & Trading page -Scroller
Short -Medium term recommendations					
Stocks on move	Covers stocks which are likely to show significant upward movement in the next 15 days due to change in trader sentiment.	Fortnightly – every alternate Wednesday	> 7-15 days	5 – 7%	Home page, Research page & Trading page - Scroller iCLICK-2-GAIN
Monthly Technicals	Trading outlook for a month based on medium-term technical trends considering key technical indicators & statistical information.	Monthly	30 days	10%	Home Page & Research Page
Value Pick	Short term trading recommendation based on technical set-up and favourable risk/reward.				iClick-2-Gain
Rollover Analysis	Features High Dividend Yielding Stocks for assured returns on investment				Internal Mailer